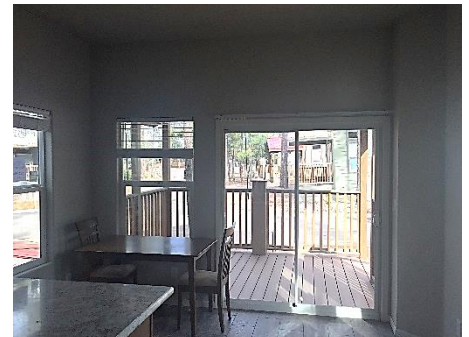


Woodfield

Cottage Home— Lot 311

\$95,900

495 Square Feet | 1-Bedroom | 1-Bath



**The home is priced turn-key complete
with a living room expansion.**



Cottage Home – Lot 311

\$95,900

Start enjoying your summer experience at Woodfield much sooner by purchasing this on-site Park Model Home.

The Cottage model includes beautiful interior features such as shaker-style cabinetry, recessed lighting in the kitchen and bathroom, 2" faux wood blinds, laundry area with a stackable LG washer & dryer included, built-in entertainment cabinet and built-in dresser bay. The upgrades in this home include 9-1/2' flat ceilings, a dishwasher, and planked flooring throughout plus an 8' covered deck to enjoy the beautiful mountain air. A living room addition has been built on to this home to allow for additional living space.

The exterior features include a metal roof, engineered fiber cement lap siding with matching skirting, and vinyl framed dual pane, low-e windows and doors. Central heating and cooling are also included.

This model home is priced complete with the site-built living room expansion at \$95,900*.

Interested in a private rear covered deck, second bedroom or storage shed? No problem. Additional site-built options can still be added to make this the summer home of your dreams**.

* Plus sales tax

** Site built options are an added cost